



VERSALIFT®

PHX

180-I

WORKING HEIGHT: 182' 11" [55.8 m]

MAX SIDE REACH: 78' 10" [23.8 m]

MAX PLATFORM CAPACITY: 2,000 lbs [907.2 kg]



The **VERSALIFT** product line has grown to encompass models for every market. Whether it be a 29' man lift or a 108' material handler, there is a **VERSALIFT** to get the job done.

For more information

Versalift
254.399.2100
www.VERSALIFT.com

VERSALIFT – Time Manufacturing 7601 Imperial Drive Waco, Texas 76712 | 254-399-2100 | www.VERSALIFT.com

PHX 180-I



General Specifications	PHX 180-I
Max Working Height	182' 11" [55.8 m]
Bottom of Platform	170' 11" [51.8 m]
Maximum Side Reach	78' 10" [23.8 m]
Maximum Platform Capacity	2,000 lbs [907.2 kg]
Maximum Material Handling	1,500 lbs [680.4 kg]
Platform Rotation	180°
Platform Dimensions	8' X 3' [2.44 X 0.91 m]
Boom Specs	
Upper Boom Articulation	170° relative to Lower Boom
Upper Boom Extension	20' 9" [6.1 m]
Lower Boom Articulation	95°
Lower Boom Extension	72' 5" [21.9 m]
Turret Rotation	Continuous
Outrigger Maximum Lateral Spread	31' [9.4 m]
Outrigger Short Jack Lateral Spread	19' 6" [5.8 m]

CHASSIS:

- GVWR, 109,000#
- DETROIT DD13 12.8L 450 HP @ 1800 RPM, 2080 GOV RPM, 1650 LB/FT @ 1100 RPM
- JACOBS COMPRESSION BRAKE
- DR 12V 160 AMP 28-SI QUADRAMOUNT PAD ALTERNATOR WITH REMOTE BATTERY VOLT SENSE
- (3) ALLIANCE MODEL 1231, GROUP 31, 12 VOLT MAINTENANCE FREE 3375 CCA THREADED STUD BATTERIES
- EATON FULLER FRO-16210C TRANSMISSION
- RZ-69-166 R-SERIES WIDE TRACK TRIDEM REAR AXLE
- AIRLINER 69,000# TRI-AXLE REAR SUSPENSION WITH CHAIN CLEARANCE
- DRIVER CONTROLLED TRACTION DIFFERENTIAL - FORWARD, CENTER AND REAR TRIDEM REAR AXLES
- (1) INTERAXLE LOCK VALVE,
- (1) DRIVER CONTROLLED DIFFERENTIAL LOCK FORWARD-REAR AXLE VALVE,
- (1) CENTER AND REAR-REAR AXLE VALVE
- DETROIT DA-F-20.0-5 40,000# TANDEM FRONT AXLES
- 20,000# TAPERLEAF FRONT SUSPENSION
- FRONT SHOCK ABSORBERS
- GOODYEAR G278 MSD 425/65R22.5 20 PLY RADIAL FRONT TIRES

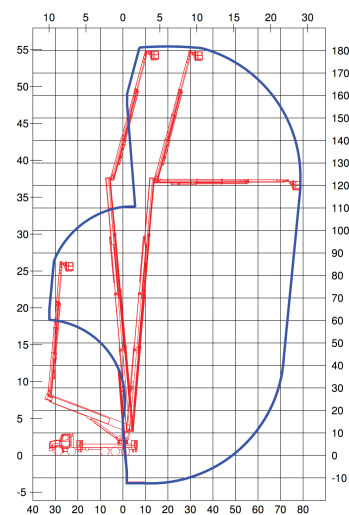
FEATURES:

- Auxiliary DC driven pump with controls in both operators' stations.
- Emergency shut off switches in all control locations, automatically stops aerial movement and shuts engine off.
- Full envelope control with automatic end of travel speed reduction
- Control stations
 - Emergency shut, automatically stops aerial movement and shuts engine off.
 - Dual Proportional Joystick
 - Color Display w/ System Diagrams

Graphic Display in Platform Provide

- Platform load,
- Upper boom extension (in percentage allowed)
- Load Moment Limit (LML)
- Platform overload buzzer in platform.

REACH DIAGRAM



- GOODYEAR G278 MSD 445/65R22.5 20 PLY RADIAL REAR TIRES
- ALCOA ALUMINUM WHEELS ALL POSITIONS
- WABCO 4S/4M ABS WITHOUT TRACTION CONTROL
- 80 GALLON/302 LITER ALUMINUM FUEL TANK - RH
- 13 GALLON DIESEL EXHAUST FLUID TANK
- HEATER, DEFROSTER AND AIR CONDITIONER
- LH AND RH ELECTRIC DOOR LOCKS
- BASIC HIGH BACK AIR SUSPENSION DRIVER & PASSENGER SEAT WITH MECHANICAL LUMBAR AND INTEGRATED CUSHION EXTENSION
- BASIC HIGH BACK NON SUSPENSION PASSENGER SEAT
- AM/FM RADIO WITH FRONT AND REAR AUXILIARY INPUT
- FED DOT inspection