

# VERSALIFT

## VT-54-190-F

Chassis mounted telescopic platform



Renault D14  
(14,000 kg GVW)



PTO driven hydraulic  
pump



FPC controls with up to  
4 actions at a time



Knuckle/turret tailswing  
within the mirrors



Outriggers within the  
mirrors



1 kV certified low  
voltage insulation

## Available specifications



## Dimensions



**Length:** 7,130 mm

**Height:** 3,800 mm

**Wheelbase:** 3,500 mm

## Additional equipment

- Workshop module for the chassis
- Workshop interior
- LED ceiling lights in the workshop module
- Bucket rotator (2 x 60°)\*\*\*
- Outrigger pads with holders
- Reversing camera
- Tow bar
- Power pack
- Removable LED spotlight
- Home function & limited working area without outriggers

## Diagramme(s)

## Key features



Workshop module for the chassis (optional)



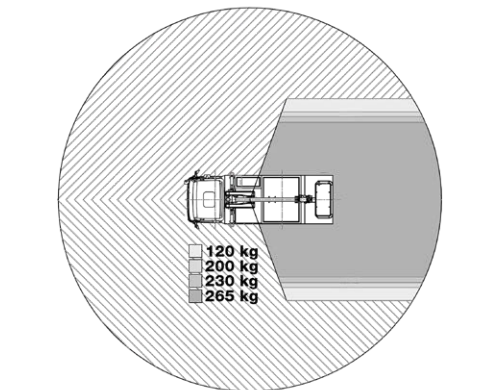
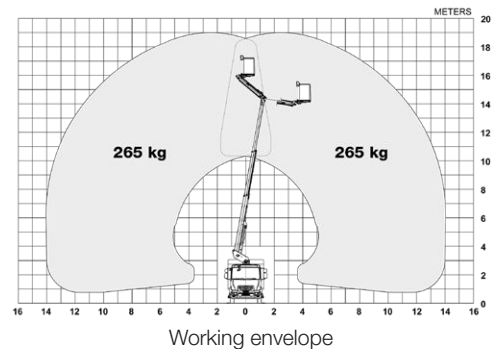
Workshop interior (optional)



Turret/knuckle tail swing and outriggers within the mirrors



FPC (Full Proportional CANbus controls): Up to 4 simultaneous actions (2 per joystick)



## Distributor

## Notes

Technical information is subject to change without prior notice. Images may show optional equipment. Installations and/or options may not be available in your specific region.

\* Depending on the vehicle.

\*\* Max payload with a driver, a passenger and a full tank of fuel (260 kg added to the installation weight).

\*\*\* Reduced outreach and max 230 kg bucket capacity.