

VERSALIFT VDT-170-F

Chassis mounted telescopic platform



MAN TGL / Mercedes Atego
(7,490 kg GVW)



PTO driven hydraulic
pump



FPC controls with up to
4 actions at a time



Knuckle/turret tailswing
within the mirrors



Outriggers within the
mirrors



1 kV certified low
voltage insulation

Available specifications



Dimensions



Length: 7,085 mm

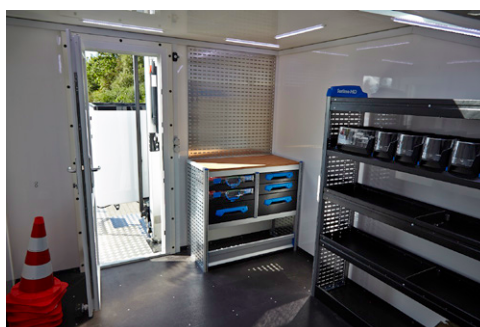
Height: 3,650 mm

Wheelbase: 3,600 mm

Key features



Workshop module for the chassis (optional)



Workshop interior (optional)



H-frame outriggers

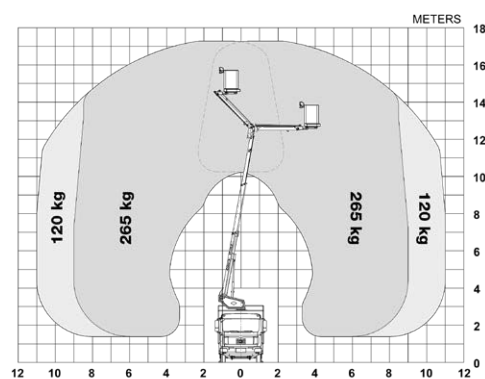


FPC (Full Proportional CANbus controls): Variable outreach (with load cell) and up to 4 actions at a time

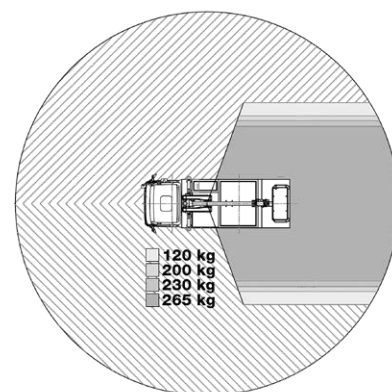
Additional equipment

- Hydraulic axle locking system
- Workshop module for the chassis
- Workshop interior
- Bucket rotator (2 x 85°)***
- Extended bucket (replaces standard bucket)
- Outtrigger pads with holders
- Reversing camera
- Drive option (drive the vehicle with raised platform)****
- Load cell (Variable load dependant outreach)
- Home function & limited working area without outriggers

Diagramme(s)



Working envelope



Limited working area without outriggers (optional)

Distributor

Notes

Technical information is subject to change without prior notice. Images may show optional equipment. Installations and/or options may not be available in your specific region.

* Depending on the vehicle.

** Max payload with a driver, a passenger and a full tank of fuel (260 kg added to the installation weight).

*** Reduced outreach and max 230 kg bucket capacity.

**** Requires the option "Limited working area without outriggers".

C658FB (Versalift VDT-170-F on MAN TGL / Mercedes Atego Chassis) - revision 2018/10

www.TimeIntl.dk