

VERSALIFT

VT-66-250-FE

Chassis mounted telescopic platform with hydraulic elevator



Renault Access
(18,000 kg GVW)



Hydraulic lift elevator



Reach worksites up and
over obstacles



PTO driven hydraulic
pump



FPC controls with up to
4 actions at a time



1 kV certified low
voltage insulation

Available specifications



25.2 m



23.2 m



17.0 m*



265 kg



2 man Euro



180°



FPC



2 x H-frame



Optional



18,000 kg



3,560 kg**



420°



5/10°



1 kV

Dimensions



Length: 9,450 mm

Height: 3,900 mm

Wheelbase: 5,000 mm

Key features



Reach worksites "up and over" obstacles



Hydraulic lift elevator (3 m)



Workshop module for the chassis (optional)



FPC (Full Proportional CANbus controls): Variable outreach (with load cell) and up to 4 actions at a time

Notes

Technical information is subject to change without prior notice. Images may show optional equipment. Installations and/or options may not be available in your specific region.

* Depending on the vehicle.

** Max payload with a driver, a passenger and a full tank of fuel (260 kg added to the installation weight).

*** Reduced outreach and max 230 kg bucket capacity.

Additional equipment

Workshop module for the chassis

Workshop interior

Bucket rotator (2 x 85°)***

Extended bucket

Aluminium basket

Inverter

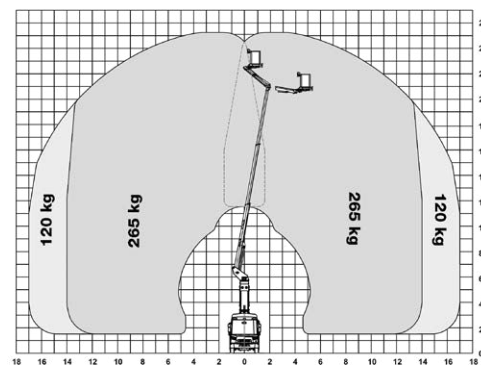
Power pack

Outrigger pads with holders

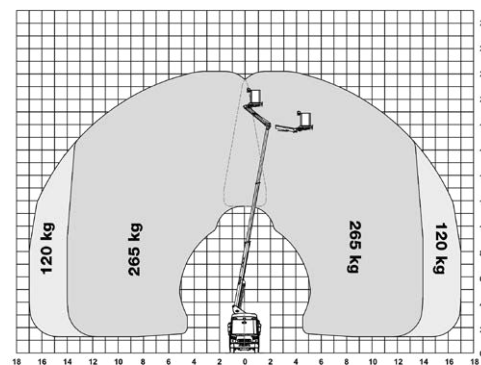
Load cell (Variable load dependant outreach)

Home function & limited working area without outriggers

Diagramme(s)



Working envelope with raised elevator



Working envelope with lowered elevator

Distributor