

VERSALIFT

VT-66-250-FE

Chassis mounted telescopic platform with hydraulic elevator



MAN TGM
(15,500 kg GVW)



Hydraulic lift elevator



Reach worksites up and
over obstacles



PTO driven hydraulic
pump



FPC controls with up to
4 actions at a time



1 kV certified low
voltage insulation

Available specifications



Dimensions

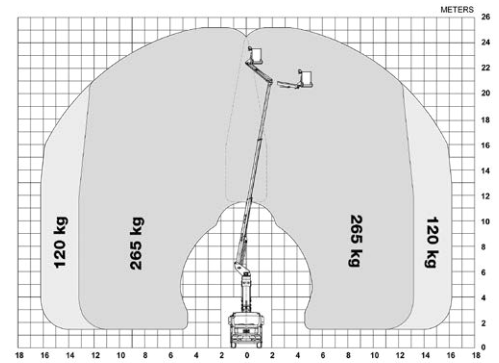


Length: 8,720 mm **Height:** 3,750 mm **Wheelbase:** 4,125 mm

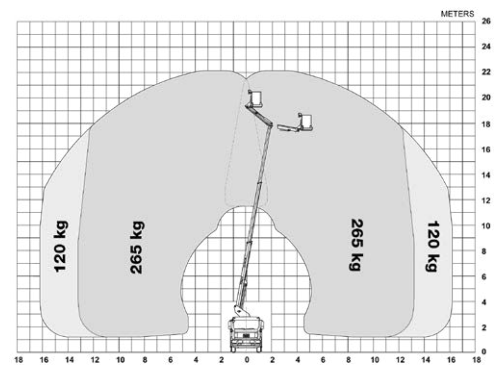
Additional equipment

- Cabinets for the chassis
- Workshop interior
- Tow bar
- Bucket rotator (2 x 85°)***
- Extended bucket (replaces standard bucket)
- Inverter
- Power pack
- Drive option (drive the vehicle with raised platform)****
- Load cell (Variable load dependant outreach)
- Home function & limited working area without outriggers

Diagramme(s)



Working envelope with raised elevator



Working envelope with lowered elevator

Key features



Reach worksites "up and over" obstacles



Hydraulic lift elevator (3 m)



Cabinets for the chassis (optional)



FPC (Full Proportional CANbus controls): Variable outreach (with load cell) and up to 4 actions at a time

Notes

Technical information is subject to change without prior notice. Images may show optional equipment. Installations and/or options may not be available in your specific region.

* Depending on the vehicle.

** Max payload with a driver, a passenger and a full tank of fuel (260 kg added to the installation weight).

*** Reduced outreach and max 230 kg bucket capacity.

**** Requires the option "Limited working area without outriggers".

Distributor

C710F (Versalift VT-66-250-FE on MAN TGM Chassis) - revision 2018/10

www.TimeIntl.dk