

# VERSALIFT

## VTL-135-F

Chassis mounted telescopic platform



Mercedes-Benz Sprinter  
(3,500 kg GVW)



Available for class B  
driving licence



LMC controls with  
variable outreach



Emergency lowering  
controls at the pedestal



Knuckle/turret tailswing  
within the mirrors



1 kV certified low  
voltage insulation

## Available specifications



## Dimensions

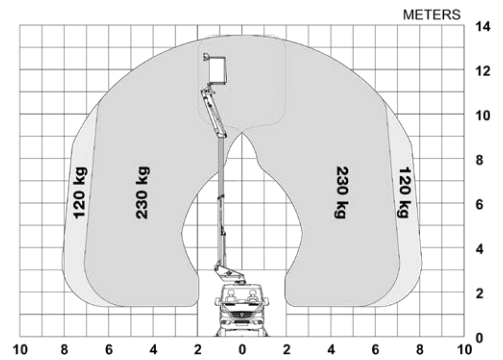


**Length:** 7,025 mm      **Height:** 3,200 mm      **Wheelbase:** 3,665 mm

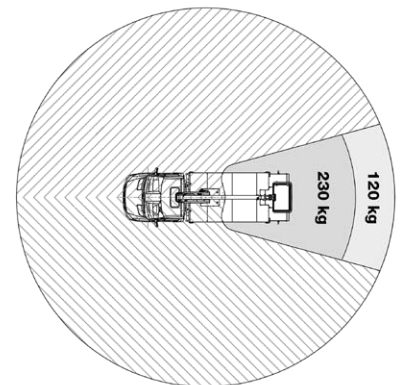
## Additional equipment

- Outrigger pads with holders
- Hydraulic axle locking system
- Cabinet for the chassis
- Sideboards for the chassis
- Bucket rotator (2 x 90°)\*\*\*
- Inverter
- Reversing camera
- Drive option (drive the vehicle with raised platform)\*\*\*\*
- Display in the upper control panel
- Stow guide & limited working area without outriggers

## Diagramme(s)



Working envelope



Limited working area without outriggers (optional)

## Key features



The shaped profile ultra high strength steel booms provide improved rigidity, stiffness and performance



Ground level emergency lowering from the chassis (pedestal mounted valve bank)



Cabinet for the chassis (optional)



LMC (Load Moment Controls): Variable outreach and up to 2 actions at a time (1 per joystick)

## Notes

Technical information is subject to change without prior notice. Images may show optional equipment. Installations and/or options may not be available in your specific region.

\* Depending on the vehicle.

\*\* Max payload with a driver, a passenger and a full tank of fuel (220 kg added to the installation weight).

\*\*\* Reduced outreach. May require axle lock.

\*\*\*\* Requires a display in the control panel and the option "Limited working area without outriggers".

## Distributor

C930L (Versalift VTL-37-135-F on Mercedes-Benz Sprinter Chassis) - revision 2018/10

[www.TimeIntl.dk](http://www.TimeIntl.dk)