

VERSALIFT VT-145-F

Van mounted telescopic platform



Mercedes-Benz Sprinter
(5,000 kg GVW)



PTO driven hydraulic
pump



FPC controls with up to
4 actions at a time



Hydraulic axle locking
system



Class leading leftover
payload



Outriggers mounted
below the vehicle

Specifications

14.6 m	12.6 m	9.5 m*	265 kg	2 man Euro	200°	FPC	Radial	Standard	5,000 kg	560 kg**	420°	5/10°	1 kV

Dimensions

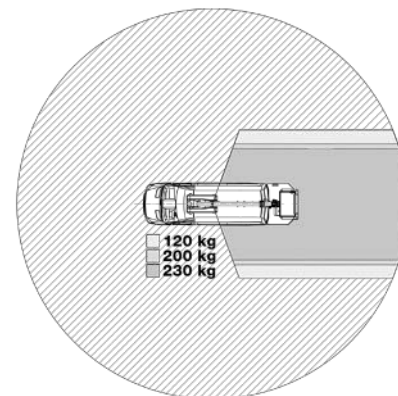
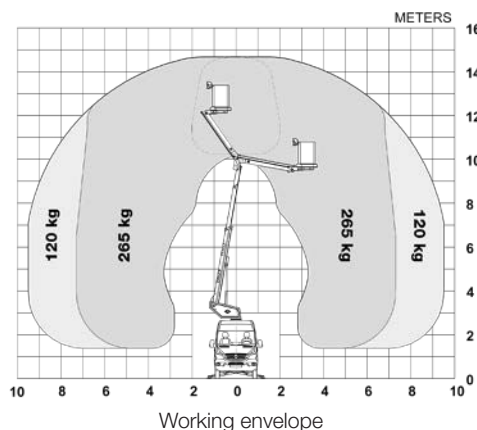


Length: 7,310 mm **Height:** 3,500 mm **Wheelbase:** 3,665 mm

Optional equipment

- Bucket rotator (2 x 85°)***
- Walk-Through-System
- Workshop interior
- Reversing camera
- GVW upgrade to 5,300 kg
- Tow bar
- Lithium-Ion power pack
- Drive option (drive the vehicle with raised platform)****
- Load cell (Variable load dependant outreach)
- Home function & limited working area without outriggers

Diagramme(s)



Key features



Hydraulic axle locking system



Workshop interior (optional)



Walk-Through-System: Direct access from the cabin to the bucket through the vehicle (optional)



FPC (Full Proportional CANbus controls): Variable outreach (with load cell) and up to 4 actions at a time

Notes

- Technical information is subject to change without notice. Images may show optional equipment.
- * Depending on the vehicle.
- ** Max payload with a driver, a passenger and a full tank of fuel (220 kg added to the installation weight).
- *** Reduced outreach and max 230 kg bucket capacity.
- **** Requires the option "Limited working area without outriggers".

Retailer

V590F (Versalift VT-145-F on Mercedes-Benz Sprinter Van) - revision 2018/05