

VERSALIFT VTL-140-F

Van mounted telescopic platform



Ford Transit
(3,500 kg GVW)



Available for class B
driving licence



LMC controls with
variable outreach



Emergency lowering
controls at the pedestal



Knuckle/turret tailswing
within the mirrors



Outriggers within the
mirrors

Specifications

13.7 m	11.7 m	8.4 m*	230 kg	2 man Eco	140°	LMC	A-frame	N/A	3,500 kg	320 kg**	420°	3/5°	1 kV

Dimensions

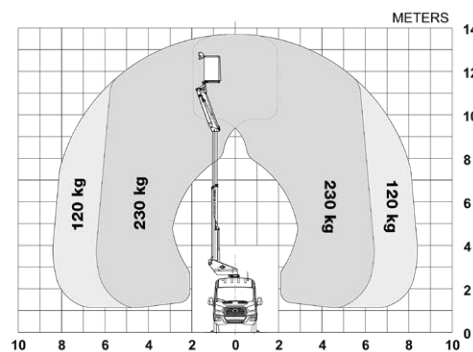


Length: 6,755 mm **Height:** 3,400 mm **Wheelbase:** 3,300 mm

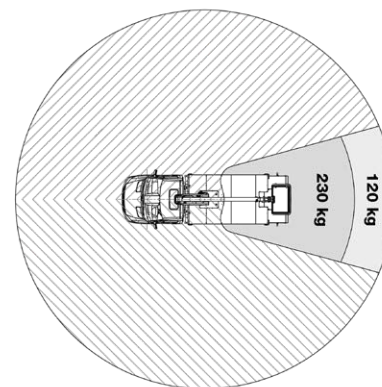
Optional equipment

- Workshop interior
- LED ceiling lights in the van
- Outrigger pads with holders
- Amber LED beacon(s) on the roof
- Inverter
- Reversing camera
- Removable LED spotlight for the bucket
- Bucket rotator (2 x 90°)***
- Display in the upper control panel
- Stow guide & limited working area without outriggers

Diagramme(s)

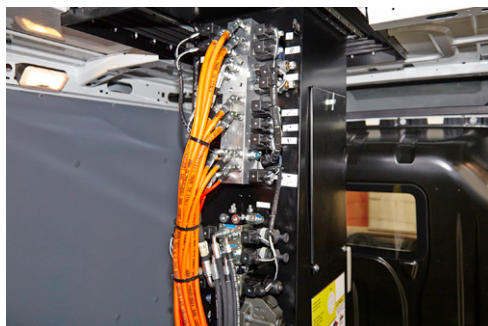


Working envelope



Limited working area without outriggers (optional)

Key features



Ground level emergency lowering from the load area (pedestal mounted valve bank)



Turret/knuckle tail swing and outriggers within the mirrors



Workshop interior (optional)



LMC (Load Moment Controls): Variable outreach and up to 2 actions at a time (1 per joystick)

Notes

- Technical information is subject to change without notice. Images may show optional equipment.
- * Depending on the vehicle.
- ** Max payload with a driver, a passenger and a full tank of fuel (220 kg added to the installation weight).
- *** Reduced outreach.

Retailer

V911L (Versalift VTL-39-140-F on Ford Transit Van) - revision 2018/04