

VO-265/270-E REAR

Articulated OverCenter Aerial Lift w/10 ft Elevator

- **WORKING HEIGHT:** Up to 75 ft 10 in (23.1 m)
- **HORIZONTAL REACH:** Up to 50 ft 8 in (15.4 m)
- **PLATFORM CAPACITY:** Up to 450 lbs (204 kg) for VO-265

**DEMAND
BETTER.
DEMAND
VERSALIFT.**



VO-270 REAR model shown here.

VERSALIFT®



VO-265/270-E REAR <<VERSALIFT>>

Articulated OverCenter Aerial Lift w/10 ft Elevator

GENERAL SPECIFICATIONS:

(Based on 40 in Frame)

VO-265 REAR WITH ELEVATOR:

| | |
|---------------------------------|---|
| Horizontal Reach Overcenter | 46 ft 2 in (14.1 m) |
| Horizontal Reach Non-Overcenter | 41 ft 11 in (12.8 m) |
| Maximum Platform Capacity | 450 lbs (204 kg) |
| Height to Bottom of Platform | 66 ft 4 in (20.2 m) |
| Working Height | 71 ft 4 in (21.7 m) |
| Stowed Travel Height | 12 ft 9 in (3.88 m) |
| Upper Boom Articulation | 270° relative to lower boom |
| Lower Boom Articulation | 125° from horizontal to 35° past vertical |

VO-270 REAR WITH ELEVATOR

| | |
|---------------------------------|---|
| Horizontal Reach Overcenter | 50 ft 8 in (15.4 m) |
| Horizontal Reach Non-Overcenter | 45 ft 5 in (13.8 m) |
| Maximum Platform Capacity | 350 lbs (159 kg) |
| Height to Bottom of Platform | 70 ft 10 in (21.6 m) |
| Working Height | 75 ft 10 in (23.1 m) |
| Stowed Travel Height | 12 ft 9 in (3.88 m) |
| Upper Boom Articulation | 245° relative to lower boom |
| Lower Boom Articulation | 125° from horizontal to 35° past vertical |

INSULATION:

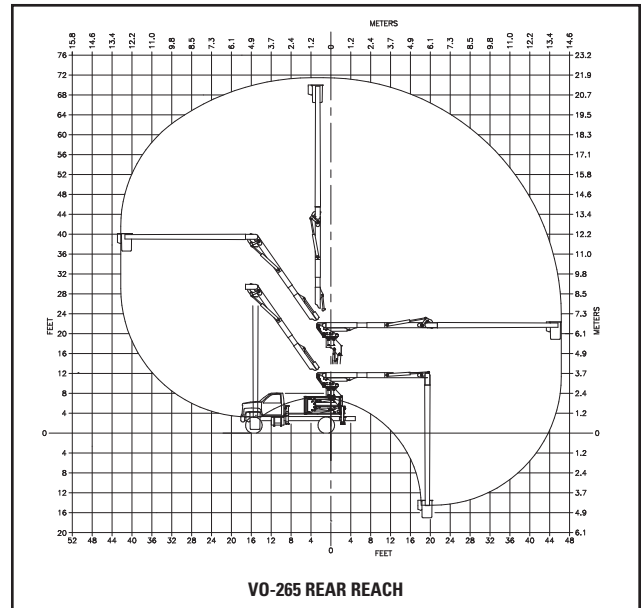
| | |
|-----------------------|---|
| Upper Boom Insulation | 214 in (5.44 m) |
| Lower Boom Insulation | 18 in standard (0.45 m) (24 in optional) |

HYDRAULIC SYSTEM:

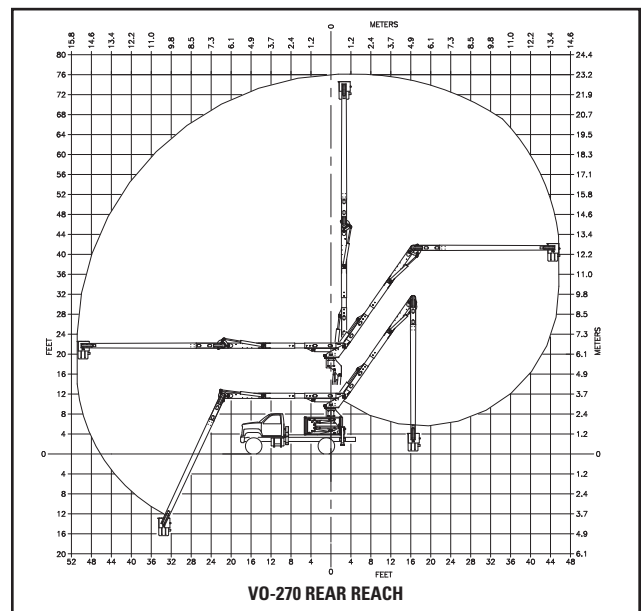
| | |
|--------------------|--------------------------------------|
| Operating Pressure | 2900 psi (200 bar) |
| Flow Rate | 7 gpm (26 lpm) |
| Filtration | 10 micron return 100 mesh suction |
| System Type | Open Center |

OPTIONS:

- Backup 12-Volt Pump
- Tool Port Flow Control
- Engine Throttle Control
- Automatic Boom Latch
- Various Platforms, Liners and Covers
- 1500 lb Lift Eye
- Category B 46 kV and below, 69 kV
- TruGuard®
- Longitudinal Elevator
- Transverse Elevator
- Hydraulic Tilt Platform
- Manual Tilt Platform



VO-265 REAR REACH



VO-270 REAR REACH

Note: Specifications on units may vary or change without prior notification due to option selections.

REV. 09/19

VERSALIFT is a leading manufacturer of bucket trucks, digger derricks and cable placers. Customers in the electric utility, telecommunications, forestry and sign, light & traffic industries experience a lower true cost of ownership by choosing Versalift. Our equipment is engineered to be lighter, while keeping the designs simple, which provides advantages like less unscheduled maintenance, greater payloads and ease of maintenance. Versalift has the lowest recall rate in the industry making it the smarter and most reliable choice. Versalift aerial lifts are the only units to feature the patented TruGuard® safety system, which provides additional protection to linemen in the bucket. Versalift is a Time Manufacturing Company, and together with Aspen Aerials has more than 1,000 employees worldwide.

REV. 01/19