

VO-42-MHI

Insulated Articulated Overcenter Aerial Lift

WORKING HEIGHT: 47.33 ft (14.33 m)

HORIZONTAL REACH OVERCENTER: 35.17 ft (10.67 m)

MAXIMUM PLATFORM CAPACITY: 400 lbs. (183 kg)



VERSALIFT

VERSALIFT is a leading manufacturer of bucket trucks, digger derricks, aerial lifts and other specialty equipment for power generation, transmission and distribution, investor-owned utility, telecommunications, light and sign, and tree care industries. Working with co-ops, municipalities, government agencies and corporations through its global network of facilities and family of dealers, the company employs nearly 800 associates worldwide.

7601 Imperial Drive, Waco, Texas 76712 | 254-399-2100 | www.VERSALIFT.com

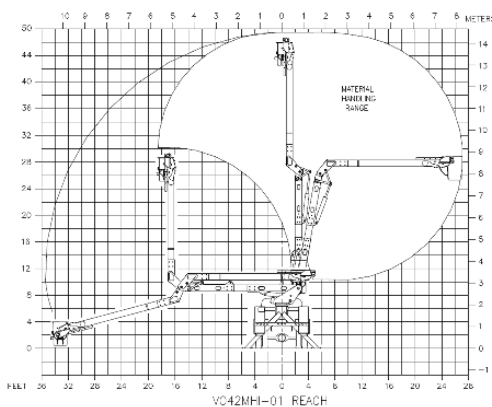
VO-42-MHI



Insulated Articulated Overcenter Aerial Lift

GENERAL SPECIFICATIONS (BASED ON 40" FRAME)

Horizontal Reach Over Center	35.17 ft (10.67 m)
Horizontal Reach Non-Overcenter	26.33 ft (7.92 m)
Standard Platform Capacity	350 lbs. (160 kg)
Maximum Platform Capacity	400 lbs. (183 kg)
Maximum Jib Capacity	1,500 lbs. (680 kg)
Lower Boom Lift Eye Capacity	2,500 lbs. (1134 kg)
WITH STANDARD PEDESTAL	
Height to Bottom	42.33 ft (12.8 m)
Working Height	47.33 ft (14.33 m)
Stowed Travel Height	11.75 ft (3.35 m)
Weight of Lift w/ Outriggers & Subframe	6,280 lbs. (2850 kg)
HYDRAULIC SYSTEM	
Operating Pressure	3000 psi (210 kg/cm ²)
Flow Rate	8 GPM (30.3 lpm)
Filtration	10 micron return 100 mesh suction
System Type	Open center
Power Source	PTO pump
BOOM ACTION	
Upper Boom Articulation	195°
Lower Boom Articulation	100°
Rotation	360° continuous
INSULATION GAP	
Upper Boom	101 in. (2.57 m)
Lower Boom	24 in. (0.61 m)



NOTE:

1. Specifications may vary without prior notice
2. Required GVWR can vary significantly with chassis, lift mounting, location, service body, accessories and desired payload.

OPTIONS:

- 400 lb. Platform Capacity
- 24 x 30 Platform
- Hydraulic Jib Pole Extension
- Two-Speed Manual Throttle Control
- Backup Pump
- Category B Dielectric Rating
- Tool Port Pressure & Flow Control
- Second Set of Tool Power Outlets
- TruGuard™