

# TMD-4045/4050/4055/4060-T

Heavy-Duty Digger Derrick

- **HORIZONTAL REACH:** Up to 50 ft 3 in (15.3 m)
- **PLATFORM CAPACITY:** Up to 30,500 lb (13850 kg)
- **DIG RADIUS:** Up to 35 ft 5 in (10.8 m)

**CLASS  
LEADING  
CAPACITY  
AND DIG RADI**



TMD-4060-T model shown here.

**VERSALIFT®**

**LOWER TRUE  
COST OF  
OWNERSHIP**

# TMD-4045/4050/4055/4060-T

Heavy-Duty Digger Derrick

|  | TMD-4045-T | TMD-4050-T | TMD-4055-T | TMD-4060-T |
|--|------------|------------|------------|------------|
|--|------------|------------|------------|------------|

**GENERAL SPECIFICATIONS:**

|                          |                      |                      |                      |                      |
|--------------------------|----------------------|----------------------|----------------------|----------------------|
| Max Platform Capacity    | 30,500 lb (13850 kg) | 30,500 lb (13850 kg) | 30,000 lb (13600 kg) | 29,200 lb (13250 kg) |
| Capacity at 10 ft Radius | 18,100 lb (8200 kg)  | 17,700 lb (8050 kg)  | 17,100 lb (7750 kg)  | 16,600 lb (7550 kg)  |

**HORIZONTAL REACH:**

|                       |                     |                     |                     |                      |
|-----------------------|---------------------|---------------------|---------------------|----------------------|
| Horizontal Reach (B1) | 18 ft 11 in (5.8 m) | 20 ft 7 in (6.3 m)  | 22 ft 3 in (6.8 m)  | 23 ft 11 in (7.3 m)  |
| Horizontal Reach (B2) | 27 ft 11 in (8.5 m) | 31 ft 3 in (9.5 m)  | 34 ft 7 in (10.5 m) | 37 ft 11 in (11.6 m) |
| Horizontal Reach (B3) | 35 ft 3 in (10.7 m) | 40 ft 3 in (12.3 m) | 45 ft 3 in (13.8 m) | 50 ft 3 in (15.3 m)  |

**SHEAVE HEIGHT:**

|                    |                     |                     |                     |                     |
|--------------------|---------------------|---------------------|---------------------|---------------------|
| Sheave Height (A1) | 29 ft 4 in (8.9 m)  | 31 ft 0 in (9.4 m)  | 32 ft 7 in (9.9 m)  | 34 ft 3 in (10.4 m) |
| Sheave Height (A2) | 38 ft 3 in (11.6 m) | 41 ft 6 in (12.6 m) | 44 ft 8 in (13.6 m) | 48 ft 0 in (14.6 m) |
| Sheave Height (A3) | 45 ft 5 in (13.8 m) | 50 ft 4 in (15.3 m) | 55 ft 3 in (16.8 m) | 60 ft 3 in (18.3 m) |

**LOAD RADIUS:**

|                  |                    |                   |                    |                   |
|------------------|--------------------|-------------------|--------------------|-------------------|
| Load Radius (R1) | 4 ft 4 in (1.3 m)  | 4 ft 7 in (1.4 m) | 4 ft 11 in (1.5 m) | 5 ft 3 in (1.6 m) |
| Load Radius (R2) | 5 ft 11 in (1.8 m) | 6 ft 5 in (2.0 m) | 7 ft 0 in (2.1 m)  | 7 ft 7 in (2.3 m) |
| Load Radius (R3) | 7 ft 1 in (2.2 m)  | 8 ft 0 in (2.4 m) | 8 ft 11 in (2.7 m) | 9 ft 8 in (3.0 m) |

**DIG RADIUS:**

|                 |                    |                     |                    |                     |
|-----------------|--------------------|---------------------|--------------------|---------------------|
| Dig Radius (S1) | 16 ft 5 in (5.0 m) | 18 ft 1 in (5.5 m)  | 19 ft 8 in (6.0 m) | 21 ft 5 in (6.5 m)  |
| Dig Radius (S2) | 25 ft 5 in (7.7 m) | 28 ft 10 in (8.8 m) | 32 ft 1 in (9.8 m) | 35 ft 5 in (10.8 m) |

**OPTIONS:**

- Auger Extensions
- Auger Stow Sling (Synthetic and Wire)
- Backup 12-Volt Pump
- Various Digger Drives up to 12,000 ft
- Various Platform Configurations
- Hydraulic Platform Leveling
- Various Outriggers & Mounting Options
- Pole Guide Interlock
- Various Swivel Hooks
- Various Pedestal Heights
- Tool/Pole Puller Tool Circuit
- Transferable Pole Guide
- Various Winch Lines
- 5 ft Underslung Jib up to 2650 lb capacity
- Dirt, Carbide & Rock Augers up to 36" Diameter

**HYDRAULIC OPTIONS:**

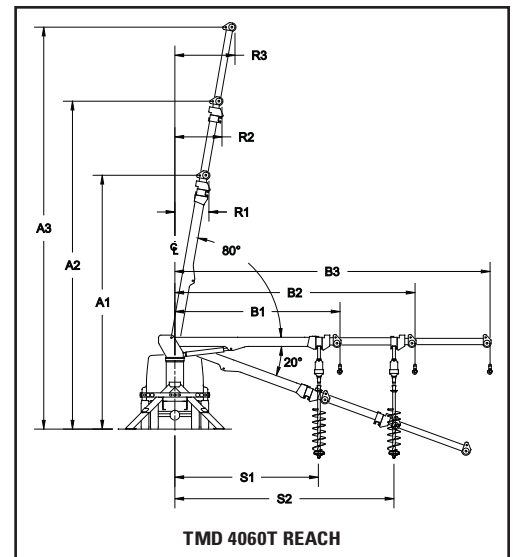
(OPEN CENTER HYDRAULIC SYSTEM)

- Hydraulic Overload Protection
- Controls Below Rotation
- Hydraulic Upper Controls Below Rotation
- Riding Seat Lower Controls with Single Stick

**RADIO CONTROL OPTIONS:**

(CLOSED CENTER HYDRAULIC SYSTEM)

- Radio Remote Controls
- Electric Overload Protection
- Hardwired Controls Below Rotation
- Radio Upper Controls
- Electro-Hydraulic Riding Seat with Radio Remote



Note: Specifications on units may vary or change without prior notification due to option selections.

REV. 09/19

**VERSALIFT** is a leading manufacturer of bucket trucks, digger derricks and cable placers. Customers in the electric utility, telecommunications, forestry and sign, light & traffic industries experience a lower true cost of ownership by choosing Versalift. Our equipment is engineered to be lighter, while keeping the designs simple, which provides advantages like less unscheduled maintenance, greater payloads and ease of maintenance. Versalift has the lowest recall rate in the industry making it the smarter and most reliable choice. Versalift aerial lifts are the only units to feature the patented TruGuard® safety system, which provides additional protection to linemen in the bucket. Versalift is a Time Manufacturing Company, and together with Aspen Aerials has more than 1,000 employees worldwide.